

III Installing firmware, who installs my MOD for the first time.

REQUIREMENTS TO THE DEVICE:

1. The presence of a slot for an SD card that has support for booting from bootable SD cards.
2. The ability of the equipment to access the "recovery" mode (i.e., by manipulating the hardware buttons)

My entry into the "Recovery" mode - press and hold the power button (or RESET or BACK button) until the buttons start flashing. Release the power button (or RESET or BACK button) and immediately briefly press this button again.

Before installing the firmware, try to enter the recovery using the hardware buttons and move to the menu (briefly press the power button (or RESET or BACK button). Apply - long press the power button (or RESET or BACK button) !!!

Download the [update_Malay_Mod_v_3.0_Oreo_8_0.rar](#) archive

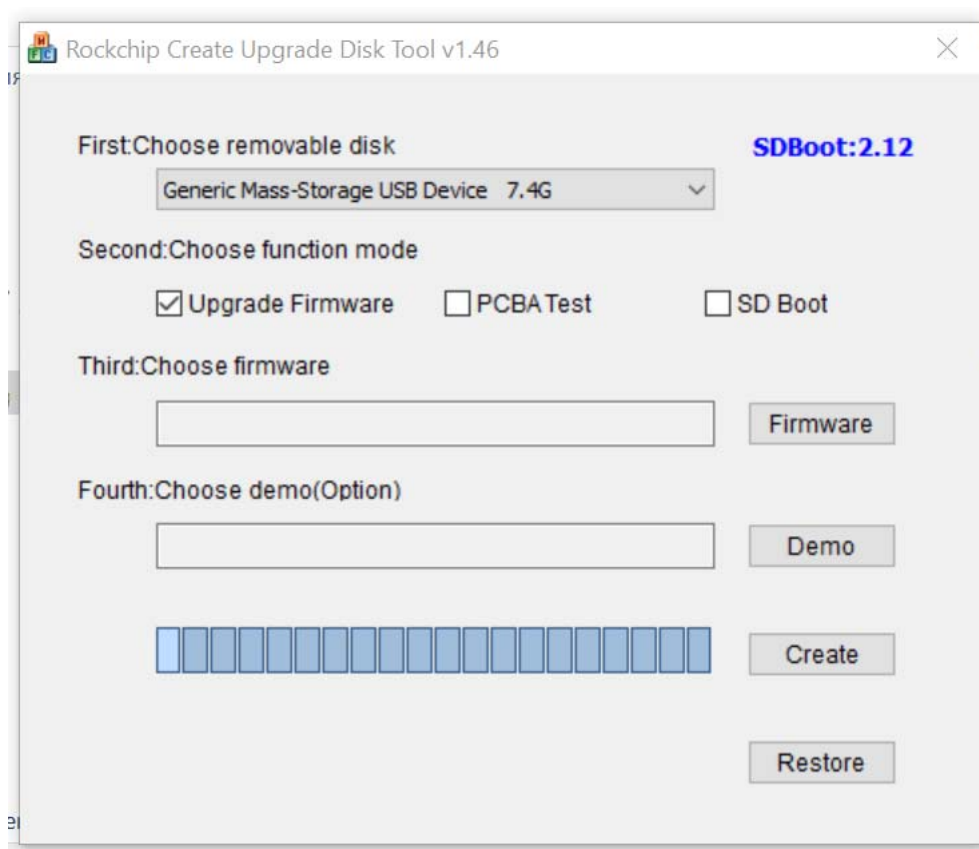
It contains 2 archives, to create a [CreateSD.rar](#) boot map and the second archive is the [update.zip](#) firmware itself.

1. Create a bootable CD card.

Unzip the archive CreateSD.rar, for example, to the root of the C drive:

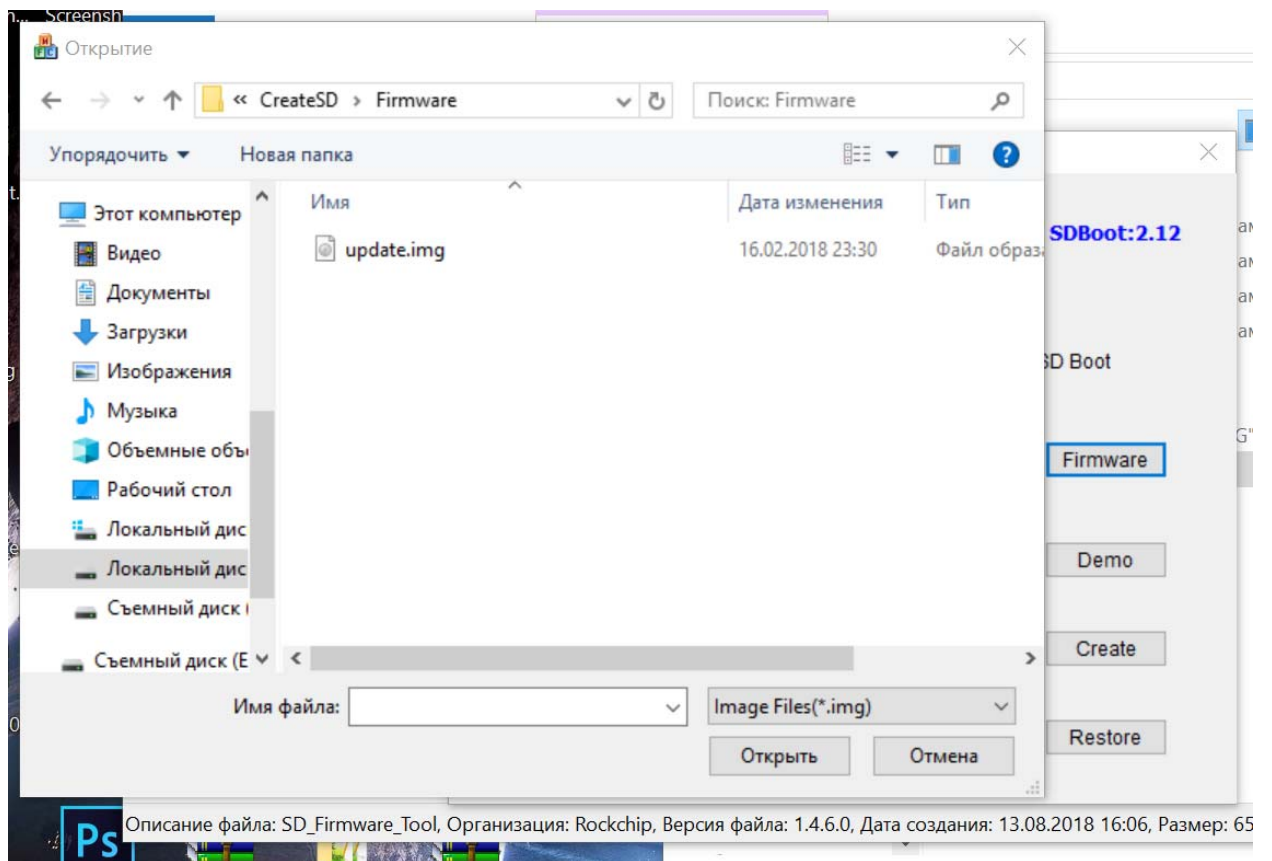
You have a folder CreateSD there, go into it, insert the SD card into the card reader (it must be formatted in FAT32)

And run the program [SD_Firmware_Tool.exe](#).

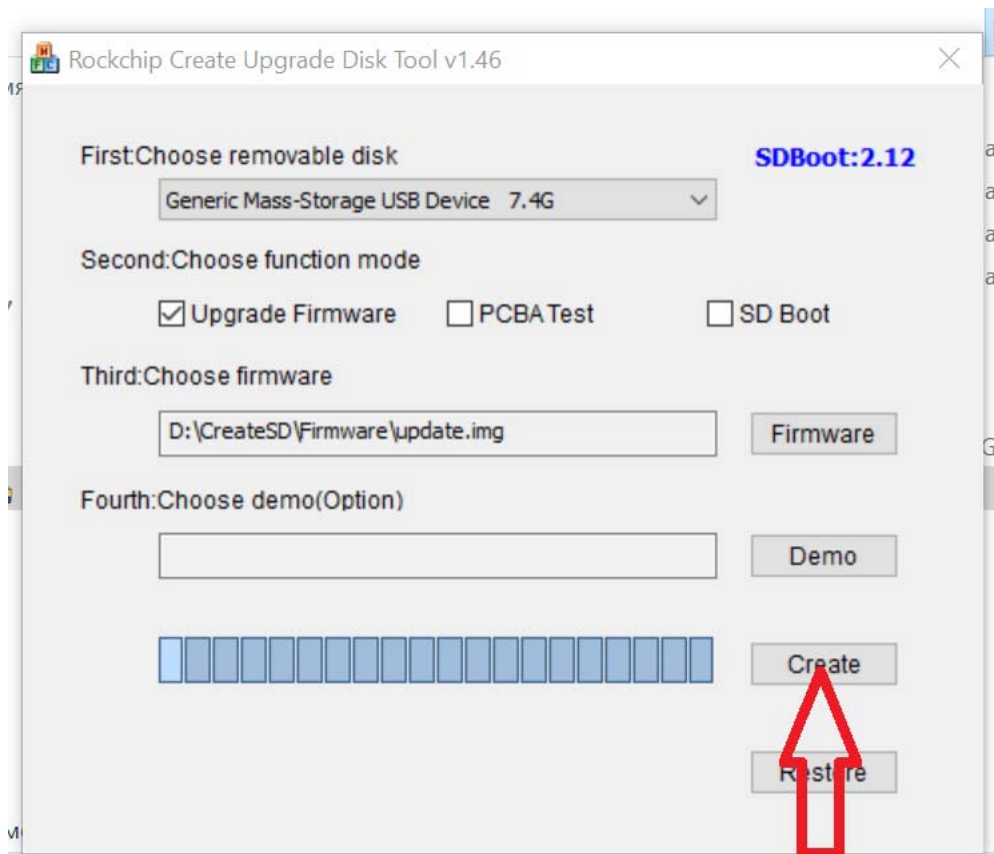


We select our boot SD card there and click on [Firmware](#).

And we go along the path [C:\CreateSD\Firmware](#) and select the file [update.img](#).

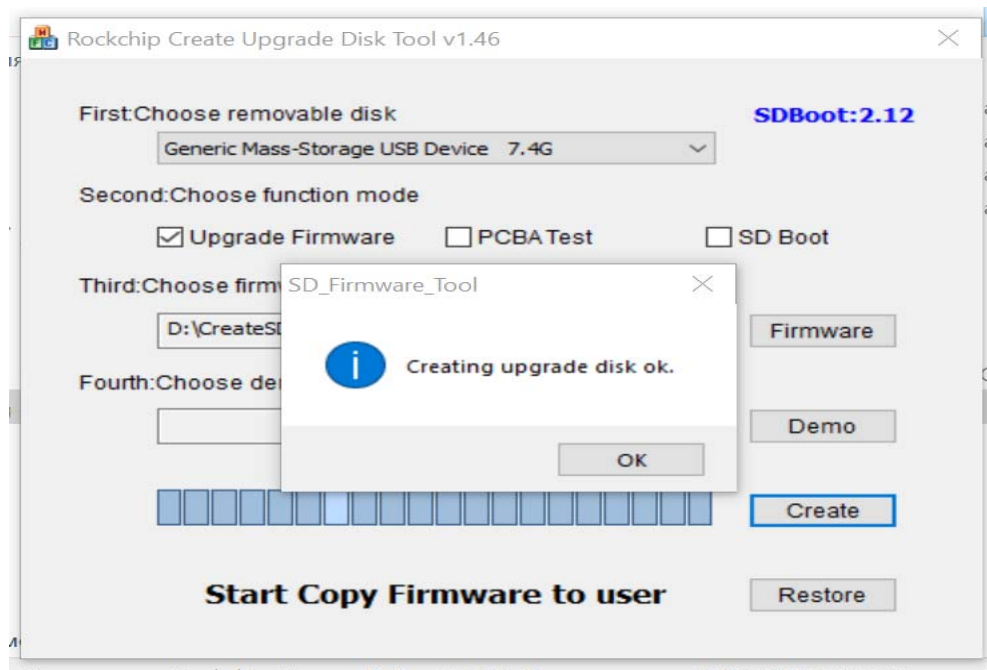


Pushthebutton**Create**.



Formatting of the SD card and copying firmware files to it begins.

If everything went well, this window will appear:

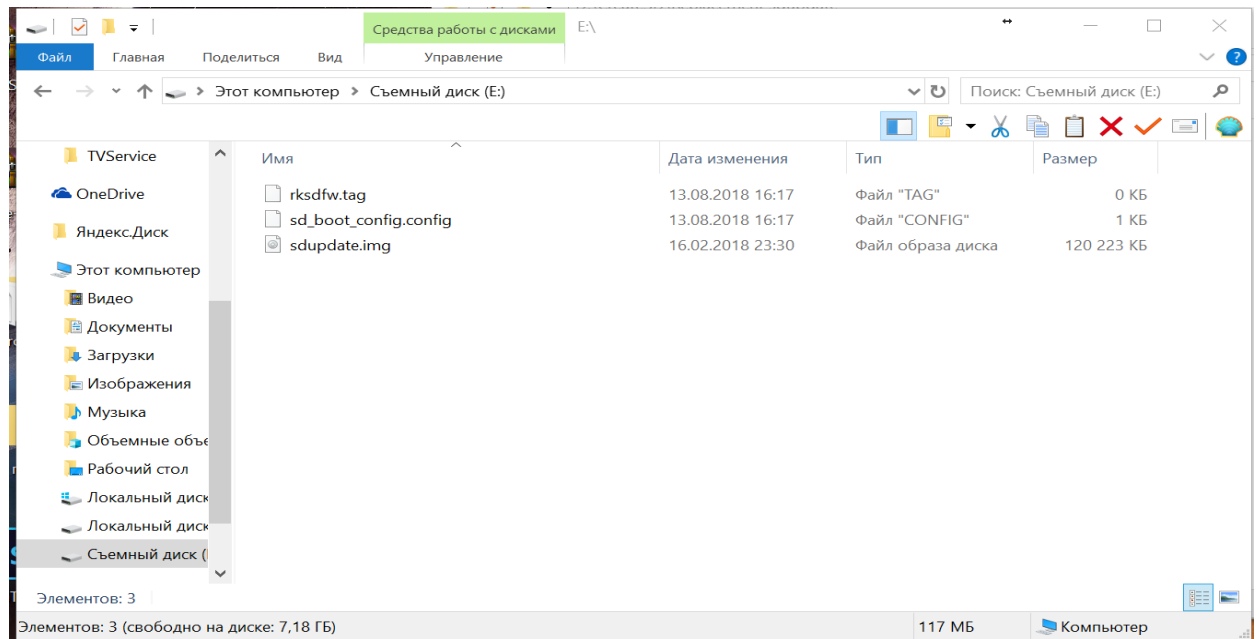


As soon as the boot SD card is created, open it in the explorer and see three files created on it:

rk sdfw.tag – zero size

sd_boot_config.config - 1 kb

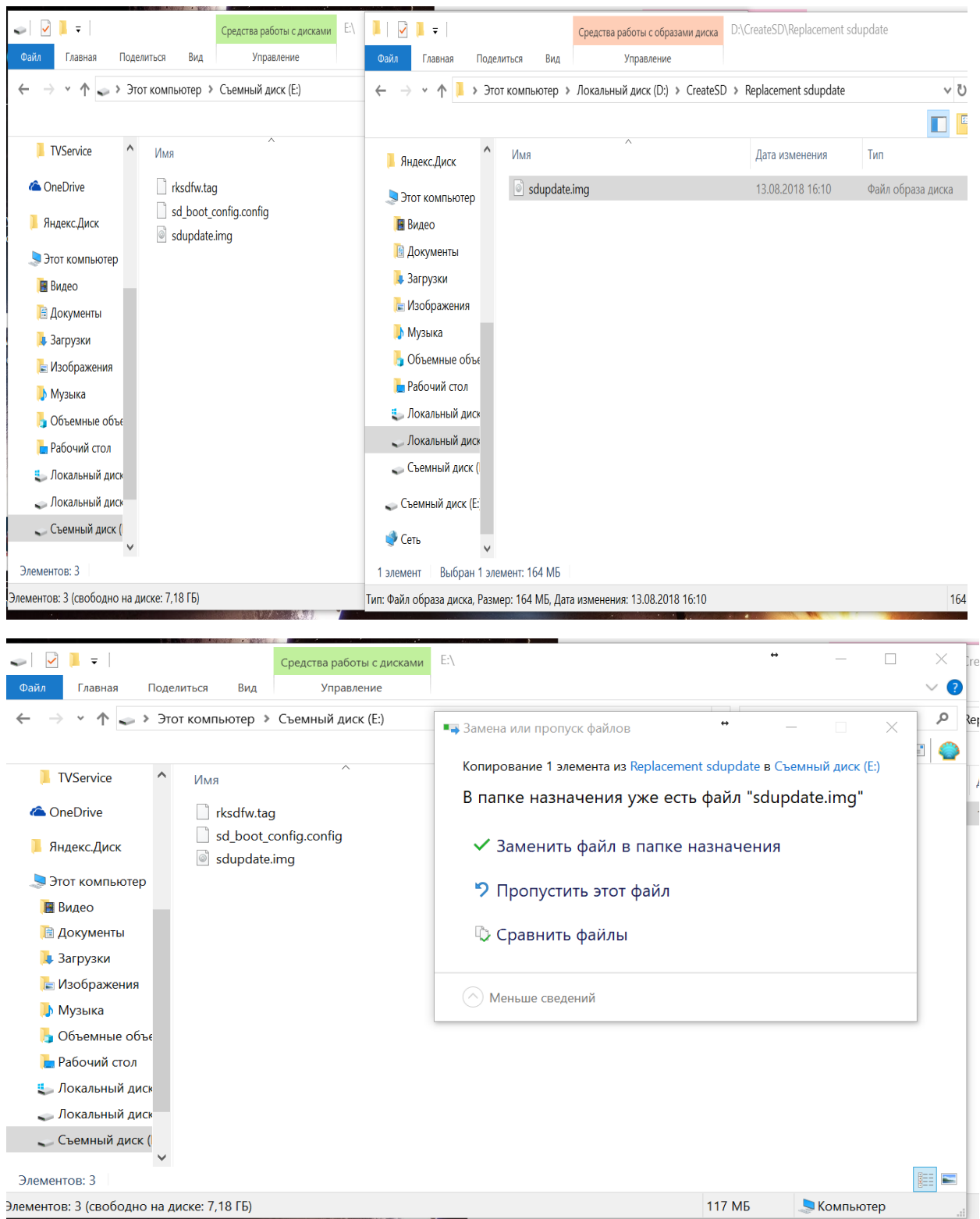
sdupdate.img – about 120 mb



Now we need to replace the **sdupdate.img** file with the same file.

Who is on the way **C:\CreateSD\Replacement sdupdate**

Copy the replacement **sdupdate.img** file from the folder **Replacement sdupdate** on sd card

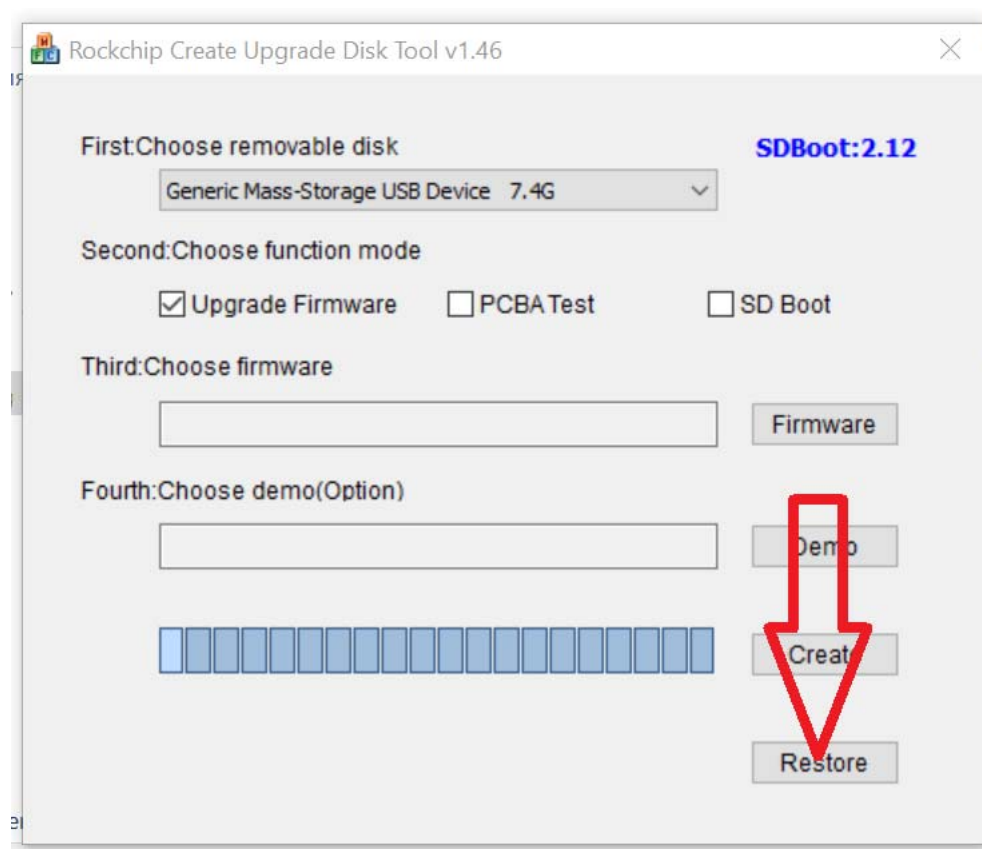


At this point we finished preparing the boot cd card!

Important note:

This SD card can not be used anywhere, except as a restoration of the radio! To use it everywhere, it will have to be restored in the

same program by clicking on the Restore button (we look at the screenshot)!



Create a second USB flash drive. A flash drive must necessarily be formatted in FAT32 !!!

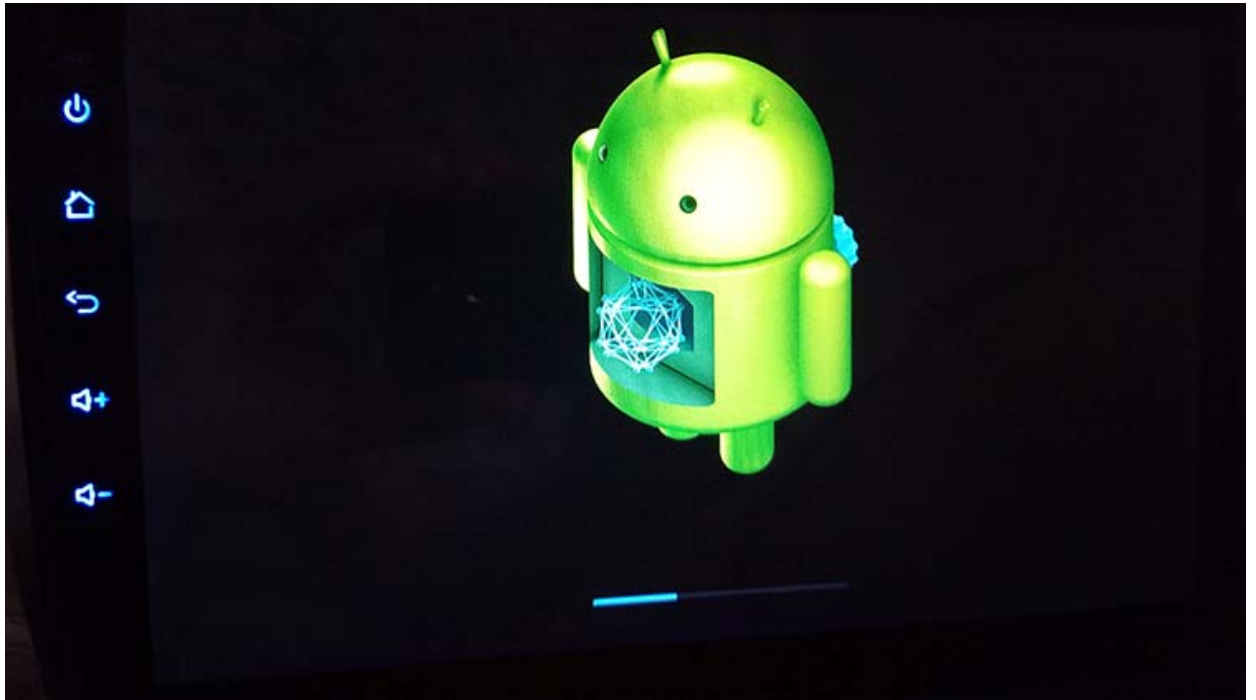
Copy the file from the archive [update_Malay_Mod_v_3.0_Oreo_8_0.rar](#) [update.zip](#) to this flash drive.

That's it, the preparation for installing the firmware is complete.

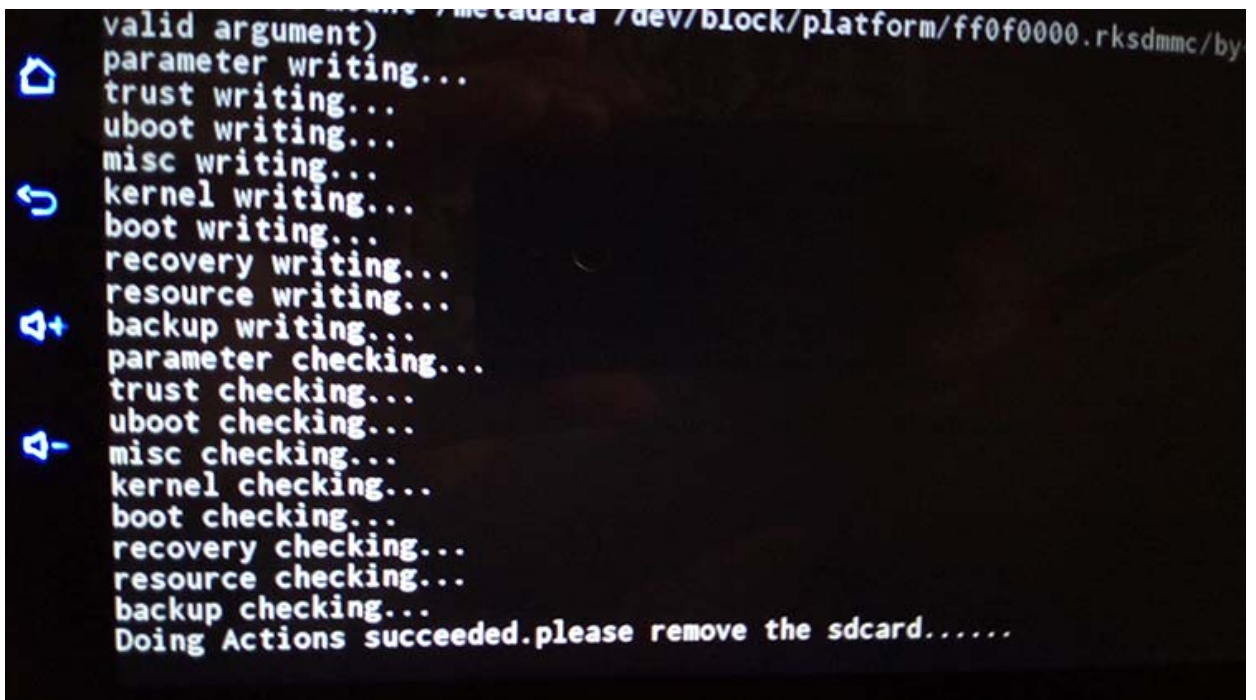
Insert the SD card into the slot for SD cards on the radio. USB flash drive in any USB connector on the radio.

Press RESET (if the radio was turned on) until the buttons blink in color and release RESET or simply turn on the radio (if it was turned off). The tape recorder will reboot and start flashing from the bootable CD

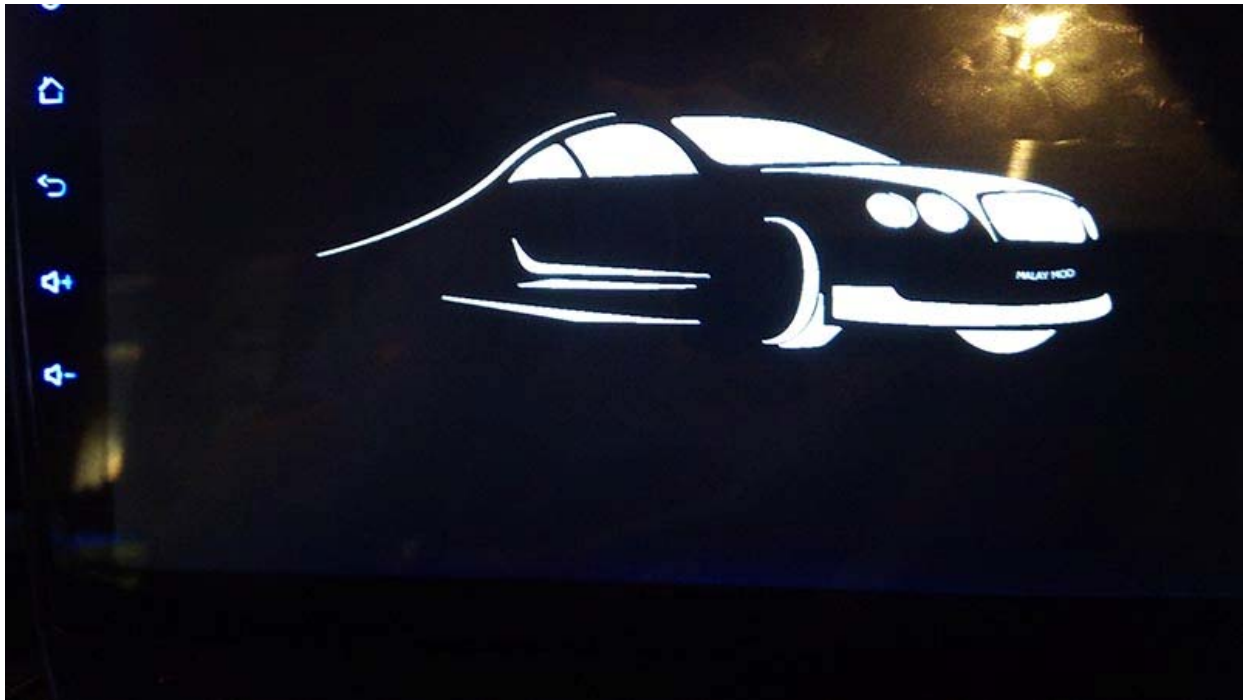
card.



As the flashing will end, you will be prompted to remove the SD card.



We take out the SD card. The radio tape recorder will immediately reboot. The word **"Erase"** will appear and the radio will restart again and the logo will appear.



Now the most important: We must immediately get into the RECOVERY. I have this way:

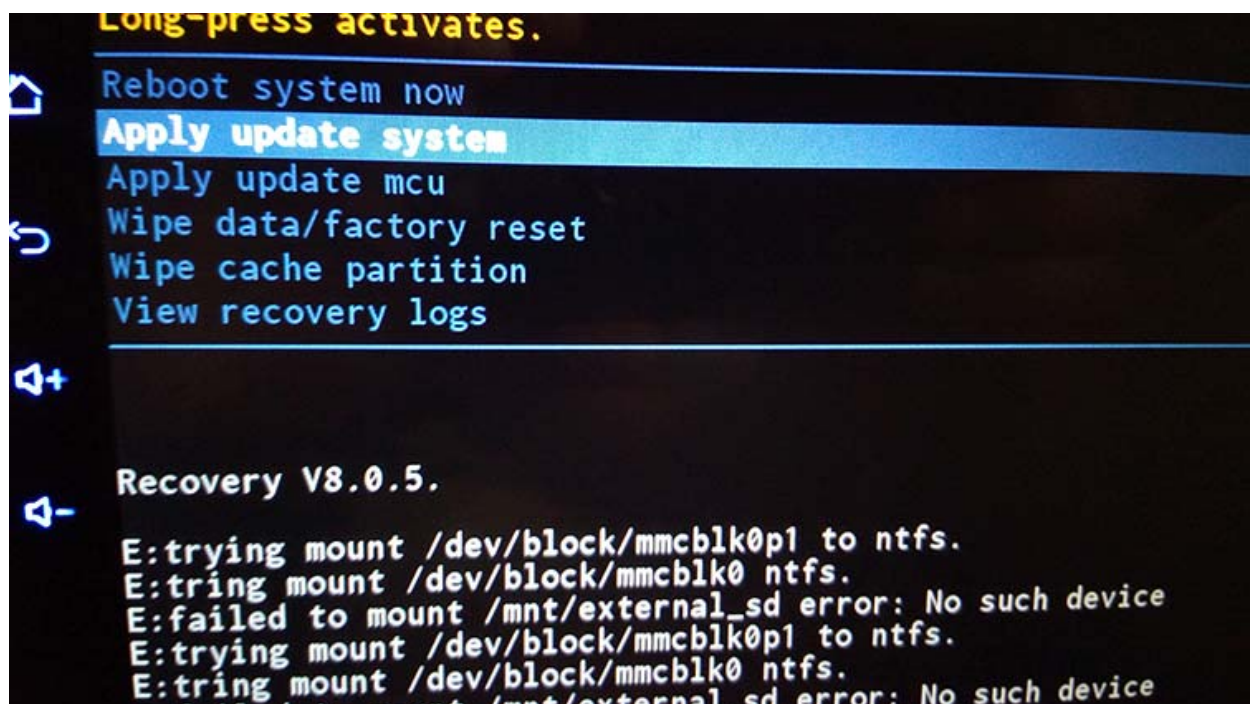
Clamp a thin object RESET until the buttons blink. I release the RESET and again immediately briefly click on it. The buttons blink once. The radio tape recorder will reboot again right away in RECOVERY.

I move to the RECURES as follows:

Short press RESET - move on points.

Long press on RECOVERY - to apply.

Go down to the Apple update system item and click Apply.



Then click apply on **FromUSBstorage**

The main flashing will begin.

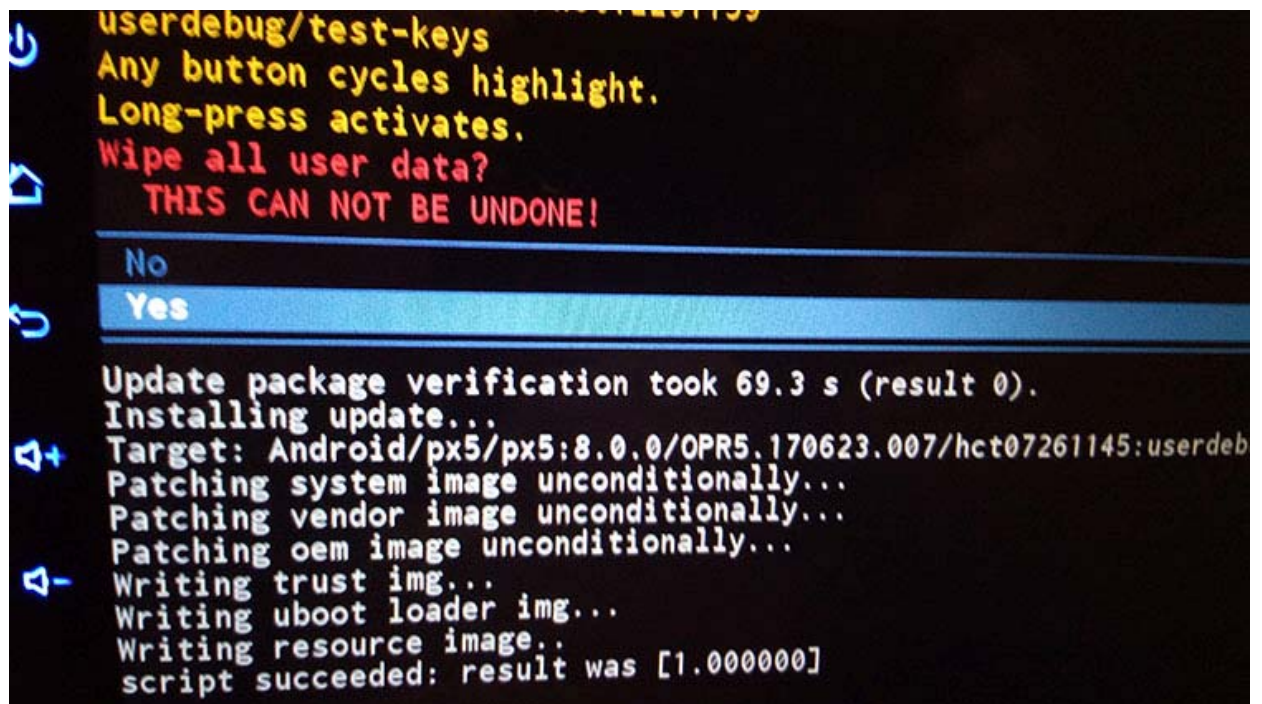
```
Recovery V8.0.5.  
E:trying mount /dev/block/mmcblk0p1 to ntfs.  
E:tring mount /dev/block/mmcblk0 ntfs.  
E:failed to mount /mnt/external_sd error: No such device  
E:trying mount /dev/block/mmcblk0p1 to ntfs.  
E:tring mount /dev/block/mmcblk0 ntfs.  
E:failed to mount /mnt/external_sd error: No such device  
-- Install /mnt/usb_storage/update.zip ...  
E:setup_install_mounts, expect/mnt/external_sd  
Finding update package...  
Opening update package...  
Verifying update package...  
Update package verification took 69.3 s (result 0).  
Installing update...  
Target: Android/px5/px5:8.0.0/OPR5.170623.007/hct07261145:userdebug/tes  
Patching system image unconditionally...  
Patching vendor image unconditionally...  
Patching oem image unconditionally...
```

As it ends, the Recovery menu will appear again.

Drop on item **Wipe Data/factory reset**.

```
userdebug/test-keys  
Any button cycles highlight.  
Long-press activates.  
Wipe all user data?  
THIS CAN NOT BE UNDONE!  
No  
Yes  
Update package verification took 69.3 s (result 0).  
Installing update...  
Target: Android/px5/px5:8.0.0/OPR5.170623.007/hct07261145:userdeb  
Patching system image unconditionally...  
Patching vendor image unconditionally...  
Patching oem image unconditionally...  
Writing trust img...  
Writing uboot loader img...  
Writing resource image..  
script succeeded: result was [1.000000]
```

We press then **YES**



How will end (a couple of seconds), click Apply - **Reboot system now**

We are waiting for download 5-7 minutes. (the first download is long, all applications are optimized)

Congratulations, the flashing is complete.