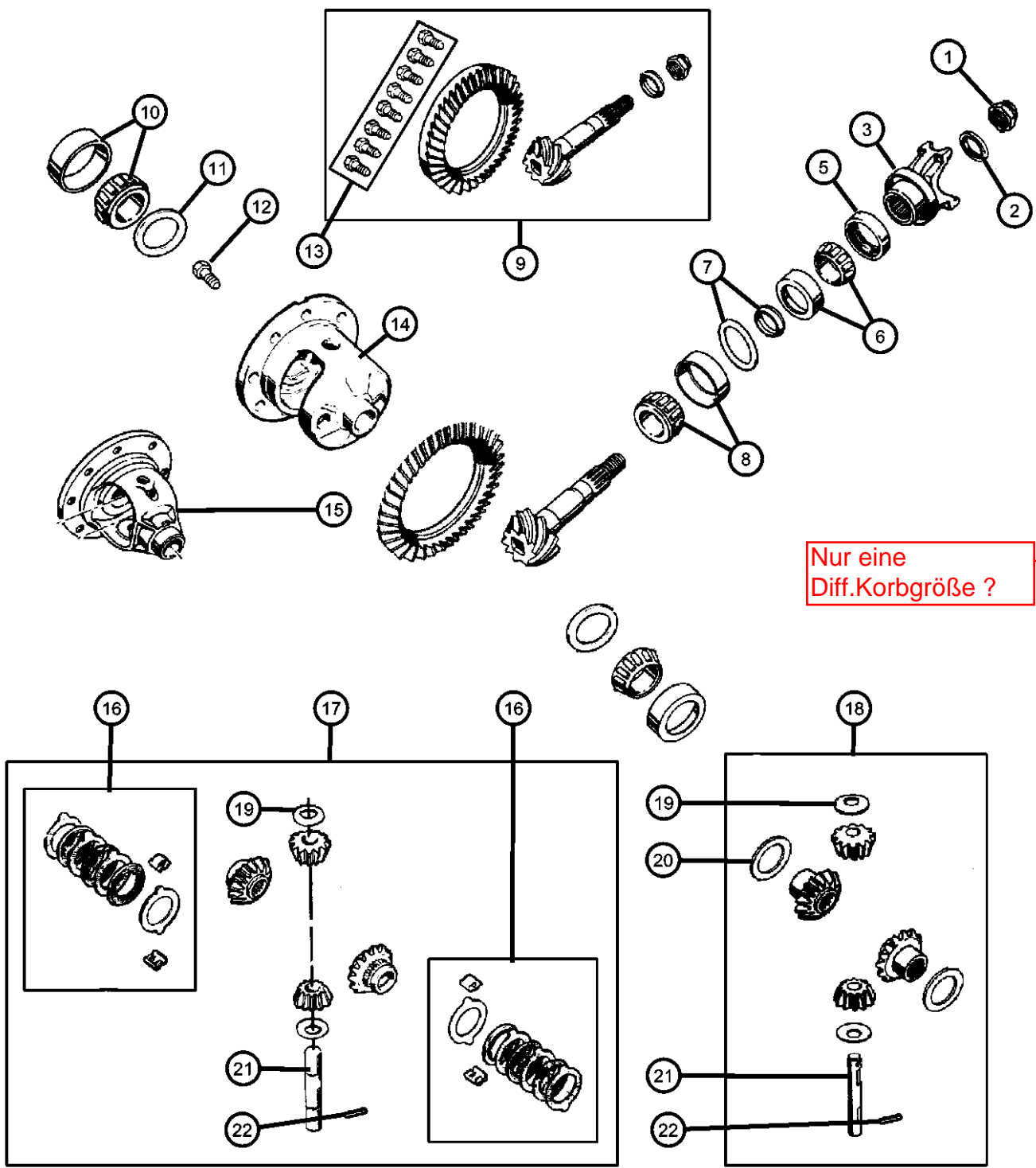


Differential,With and Without Trac-Lok [DSA] Dana 44/226MM [DRK]  
Figure 3-240

Dana44/226  
nicht Dana44/216 ?



ITEM	PART NUMBER	QTY	LINE	SERIES	BODY	ENGINE	TRANS	TRIM	DESCRIPTION
	05103018AB	1	U		77				[DMM]
	05127180AA	1	J		77				[DMF]
	04746733	1	U		77				BEARING, Differential
		1	J		77				Consists of 2 Bearings and 2 Cups
									Consists of 2 Bearings and 2 Cups
									SHIM KIT, Differential
	05093047AA	1	U		77				
		1	J		77				
12	05252503	1	U		77				SCREW, Drive Gear
		1	J						3/8 Ring gear bolts, Mounting
									3/8 Ring gear bolts, Mounting
13									BOLT KIT
	05012810AC	1	U		77				7/16' Ring Gear Bolts, Mounting
		1	J		77				7/16' Ring Gear Bolts, Mounting
14									CASE, Differential
	05103017AA	1	J		77				With [DSA] With internal Parts-7/16' Ring Gear Bolts
		1	U		77				With [DSA] With internal Parts-7/16' Ring Gear Bolts
15	05103031AA	1	J		77				CASE, Differential, Without [DSA] With Internal Parts
16									DISC AND PLATE KIT, Differential
	J0994345AB	1	J		77				With [DSA]
		1	U		77				With [DSA]
17									GEAR KIT, Center Differential
	83505432AB	1	J		77				With [DSA]
		1	U		77				With [DSA]
18	04778595	1	J		77				GEAR KIT, Center Differential, Without [DSA]
19									WASHER, Pinion Gear
	01791561	2	U		77				With or Without [DSA], Thrust
		2	J		77				With or Without [DSA], Thrust

WRANGLER (TJ)		BODY		ENGINE		TRANSMISSION	
SERIES	LINE						
H = HIGHLINE	J = JEEP - 4WD	77 = OPEN BODY 2-DOOR		ED1 = Engine - 2.4L 4 Cyl		DDD = Transmission - 5-Speed HD	
L = LOWLINE	U = JEEP - 4WD (RHD)	78 = OPEN BODY 2-DOOR		DOHC 16v SMPI		Manual	
M = MEDIUM				ERH = Engine - 4.0L Power		DDK = Transmission - 5-Speed HD	
P = PREMIUM				Tech I-6		Manual	
S = SPORT						DEH = Transmission-6-Speed Manual,	
						NSG370	
						DG6 = Transmission-4-Spd.	
						Automatic, 42RLE	
						DGG = Transmission - 3-Spd.	
						Automatic,32RH	

AR = use ase required - = Non illustrated part